

RFA910-FC-x

RF Driver / Amplifier



1208

The RFA910-FC is a combined oscillator and 10W power amplifier suitable for driving Isomet acousto-optic modulators and Q-switches such as model series M1134 and Q1133. This driver features both digital gate and analog modulation inputs for the control of the RF amplitude. Protection includes an internal over temperature sensor, and a tranzorb over voltage diode on the DC supply input. An external interlock (or RF enable) input is provided.

The RFA910-FC will operate from a +15Vdc supply (+24Vdc available). LED's indicate the status of the thermal interlocks, DC supply and RF power. The maximum RF output power is adjusted by means of a pre-set potentiometer.

This standard amplifier requires forced air-cooling. An optional fan and cover assembly or a water cooled top plate can be provided. Please specify options at order.

	<u>Freq</u>	<u>Option</u>		
RFA910	-	FC	-	X
24.0MHz	24	F	Fan fitted	
27.12MHz	27	W	Water Cooled	
40.68MHz	40	B	BNC Connector	
80.0MHz	80			

SPECIFICATION

Power Output	:	> 12 Watts Max CW (15V supply)
Load Impedance	:	50Ω
Harmonic Distortion	:	>20dB below fundamental
Mismatch Tolerance	:	The Driver will not oscillate
Centre Frequency, FC	:	see table
Frequency stability	:	± 0.003%
Frequency accuracy	:	± 0.005%
Modulation Control Voltage		
Digital	:	TTL compatible (> 2.7V, RF O/P=on)
Analog	:	0.0 to 10.0V *, 1Kohm i/p impedance (nominal)
RF ON to OFF Ratio	:	40dB below full power
Output Switching Speed	:	< 0.1μs Rise /Fall time, 0 to 10 Watts
Interlock	:	Open OFF, closed ON
	:	Sink 20mA at 28V
Power Supply	:	+15Vdc, 0.25% regulation, < 2A (+24Vdc available on certain models)
Temperature Range	:	0° to 60°C, Thermal Shutdown Interlock
R.F. Output	:	SMA (or BNC if specified)

* Other options available 0-1V, 0-5V

ALL SPECIFICATIONS SUBJECT TO CHANGE WITHOUT NOTICE

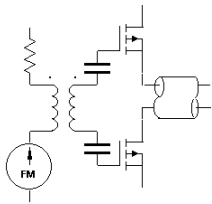
ISOMET CORP, 5263 Port Royal Rd, Springfield, VA 22151, USA.

Tel: (703) 321 8301 Fax: (703) 321 8546

E-mail: ISOMET@ISOMET.COM Web Page: WWW.ISOMET.COM

Quality Assured.

**In-house: RF & Digital design
Software Development
OEM manufacture**



RFA910-FC-x

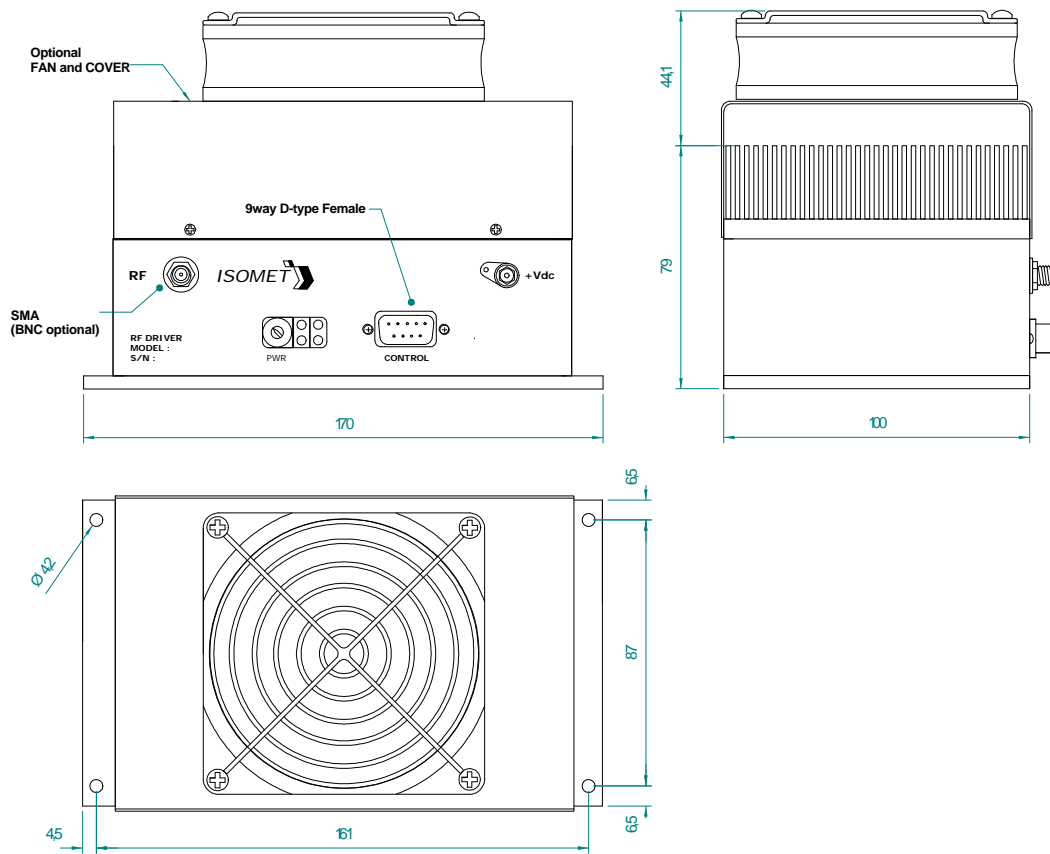
RF Driver / Amplifier



1208

Control signals -	:	9 pin 'D' type
Amplitude Control, Digital	:	+sig pn6, -rtn pn7
Amplitude Control, Analog	:	+sig pn8, -rtn pn9
Interlock enable (connect to AO)	:	+sig pn4, -rtn pn5 (closed = on)
Interlock monitor, TTL compatible	:	+sig pn1, -rtn pn2 (+5V = OK, 0V = fault)
Power Input	:	Feed through filter solder tag

OUTLINE DRAWING



Model RFA910-80-F shown

Dimensions: mm

ALL SPECIFICATIONS SUBJECT TO CHANGE WITHOUT NOTICE
 ISOMET CORP, 5263 Port Royal Rd, Springfield, VA 22151, USA.
 Tel: (703) 321 8301 Fax: (703) 321 8546
 E-mail: ISOMET@ISOMET.COM Web Page: WWW.ISOMET.COM

Quality Assured.
 In-house: RF & Digital design
 Software Development
 OEM manufacture