

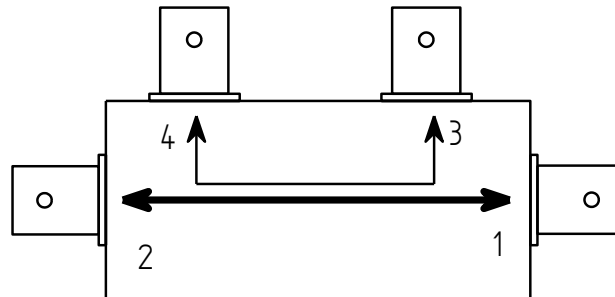
RFSNF-40

RF Sniffer



0811

An in-line bi-directional coupler for monitoring forward and reflected RF power.
 This is not a calibrated item. It is intended for comparative measurements or to indicate the presence of RF.
 A useful aid for checking return loss using an oscilloscope when high power RF attenuator is unavailable.



Connect the "through" high level RF power across Port 1 to Port 2

Monitor the coupled low power output on Ports 3 – 4

<u>Input</u>	<u>Forward</u>	<u>Reflected</u>	<u>Output</u>
Port 1	Port 3	Port 4	Port 2
or			
Port 2	Port 4	Port 3	Port 1

Notes:

Not calibrated.

Coupling efficiency is frequency dependent, approximately 100:1 at 40MHz

Higher frequencies are coupled with greater efficiency. The relative magnitude of the harmonic content will appear greater at Ports 3 and 4

Ports 3 and 4 should be terminated with 50 ohm

ALL SPECIFICATIONS SUBJECT TO CHANGE WITHOUT NOTICE
 ISOMET CORP, 5263 Port Royal Rd, Springfield, VA 22151, USA.
 Tel: (703) 321 8301 Fax: (703) 321 8546
 E-mail: ISOMET@ISOMET.COM Web Page: WWW.ISOMET.COM

Quality Assured.
 In-house: Crystal Growth,
 Optical Polishing,
 A/R coating, Vacuum Bonding