

RFA0120-2-15

RF Amplifier



0721

The RFA0120-2 contains a pair of class-A solid-state RF amplifier and is designed to operate with *ISOMET* multi-output frequency synthesizers. Each output will deliver up to 15 Watts power across a frequency bandwidth of 100 to 140 MHz

Each channel requires 0dBm (1mW) RF input. There is no gain adjustment. The RF power, amplitude modulation and phase are determined by the input source. Diagnostics are also provided. This is compatible with iMS4 synthesizer amplifier interface and includes forward/reflected RF power (relative readings), DC current and temperature. Protection includes over-temperature, reverse DC voltage connection.

SPECIFICATIONS

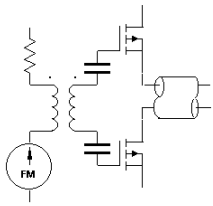
Power Out, <u>each output</u> :	15 Watts CW into 50Ω
Load VSWR:	< 2.5:1 for best results
Output RF power variation vs. freq':	≤ 1 dB over specified bandwidth
Spurious output:	Harmonics > 20dB below fundamental
Frequency Range:	100 – 140 MHz, minimum.
RF input:	3dBm max, 0dBm typical
Gain:	> 40dB
Input impedance:	50 ohm (nominal)
RF amplitude rise/fall time	< 50nsec typical (input dependent)
DC power input:	+24V to 28Vdc* at <3A regulated to ± 0.25%
Temperature range:	0°C to 60°C ambient temperature. Integrated water cooled heatsink. Mounting face must not exceed 70°C.

Refer application note AN1906 regarding coolant specification

* +28Vdc supply will give increased maximum RF power

ALL SPECIFICATIONS SUBJECT TO CHANGE WITHOUT NOTICE
 ISOMET CORP, 10342 Battleview Parkway, Manassas, VA 20109, USA.
 Tel: (703) 321 8301 Fax: (703) 321 8546
 E-mail: ISOMET@ISOMET.COM Web Page: WWW.ISOMET.COM

Quality Assured.
In-house: RF & Digital design
Software Development
OEM manufacture



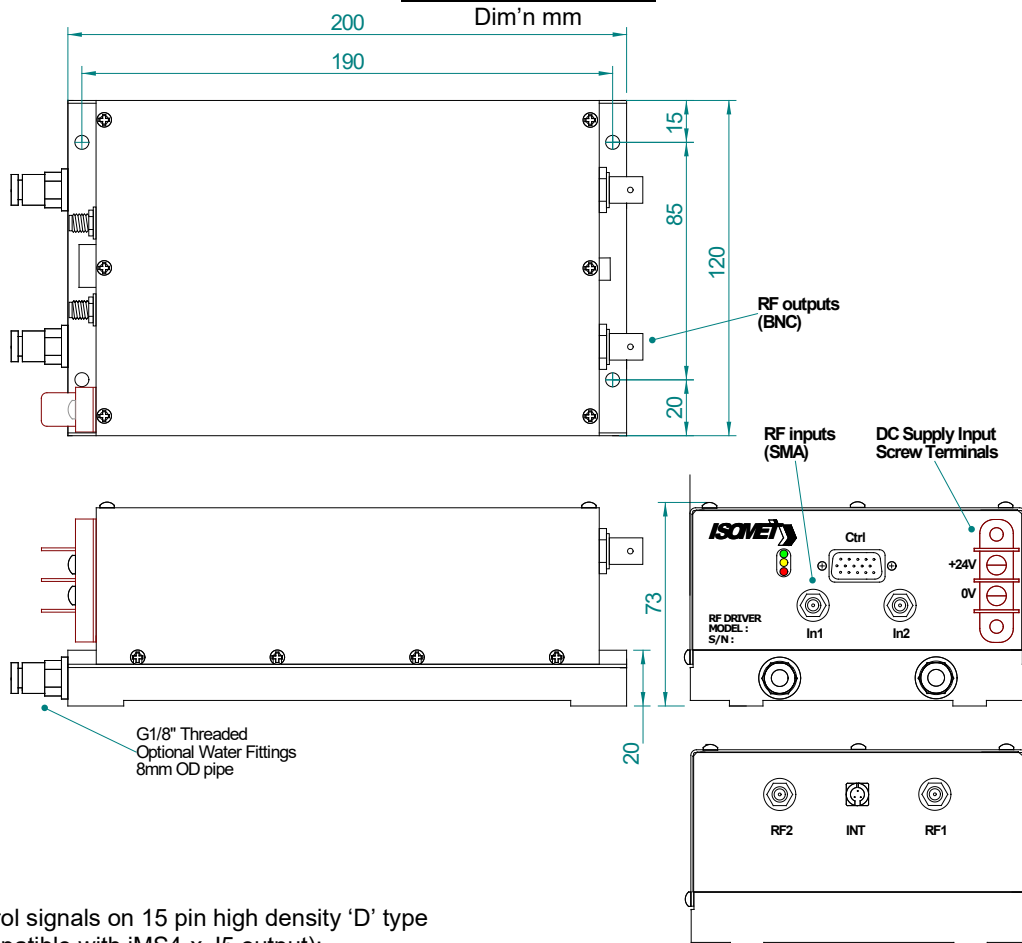
RFA0120-2-15

RF Amplifier



0721

OUTLINE DRAWING



Control signals on 15 pin high density 'D' type
(Compatible with iMS4-x J5 output):

pin	signal	pin	signal	pin	signal
1	+5V OUT	6	reserved	11	reserved
2	reserved	7	0V	12	Interlock Monitor OUT
3	reserved	8	reserved	13	reserved
4	0V OUT	9	Amplifier Enable (-Gate) IN	14	reserved
5	reserved	10	+5V out	15	reserved

DO NOT connect to reserved pins

Options -x:

- BR : Brass water cooled heatsink (water fittings on RF output face)

ALL SPECIFICATIONS SUBJECT TO CHANGE WITHOUT NOTICE
 ISOMET CORP, 10342 Battlevue Parkway, Manassas, VA 20109, USA.
 Tel: (703) 321 8301 Fax: (703) 321 8546
 E-mail: ISOMET@ISOMET.COM Web Page: WWW.ISOMET.COM

Quality Assured.
 In-house: RF & Digital design
 Software Development
 OEM manufacture