

RFA080-1-25

RF Amplifier



4020

The RFA080-1 contains a class-A solid-state RF amplifier and is designed to operate with *ISOMET* frequency synthesizers. The output will deliver up to 25 Watts power across a frequency bandwidth of 65 to 95 MHz.

The amplifier requires up to 0dBm (1mW) RF input at the desired output frequency. There is no gain adjustment. The RF power and amplitude modulation are determined by the input source. The design includes over temperature and high reflected power protection.

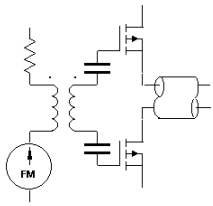
SPECIFICATIONS

Power Out :	25 Watts Maximum CW into 50Ω
Load VSWR:	< 2.5:1 for best results
Output RF Power Variation vs. freq':	≤ 1 dB over specified bandwidth
Spurious Outputs:	Harmonics > 20dB below fundamental
1dB Bandwidth	65-95MHz minimum
RF input:	3dBm max
Gain:	> 40dB
Input Impedance:	50 ohm (nominal)
RF Amplitude rise/fall time	< 50nsec typical (input dependent)
DC Power Input:	+24V to 28Vdc* at <3A regulated to ± 0.25%
Temperature Range:	0°C to 60°C ambient temperature. Mounting face must not exceed 70°C.

* +28Vdc supply will give increased maximum RF power

ALL SPECIFICATIONS SUBJECT TO CHANGE WITHOUT NOTICE
 ISOMET CORP, 10342 Battleview Parkway, Manassas, VA 20109, USA.
 Tel: (703) 321 8301 Fax: (703) 321 8546
 E-mail: ISOMET@ISOMET.COM Web Page: WWW.ISOMET.COM

Quality Assured.
In-house: RF & Digital design
Software Development
OEM manufacture



RFA080-1-25

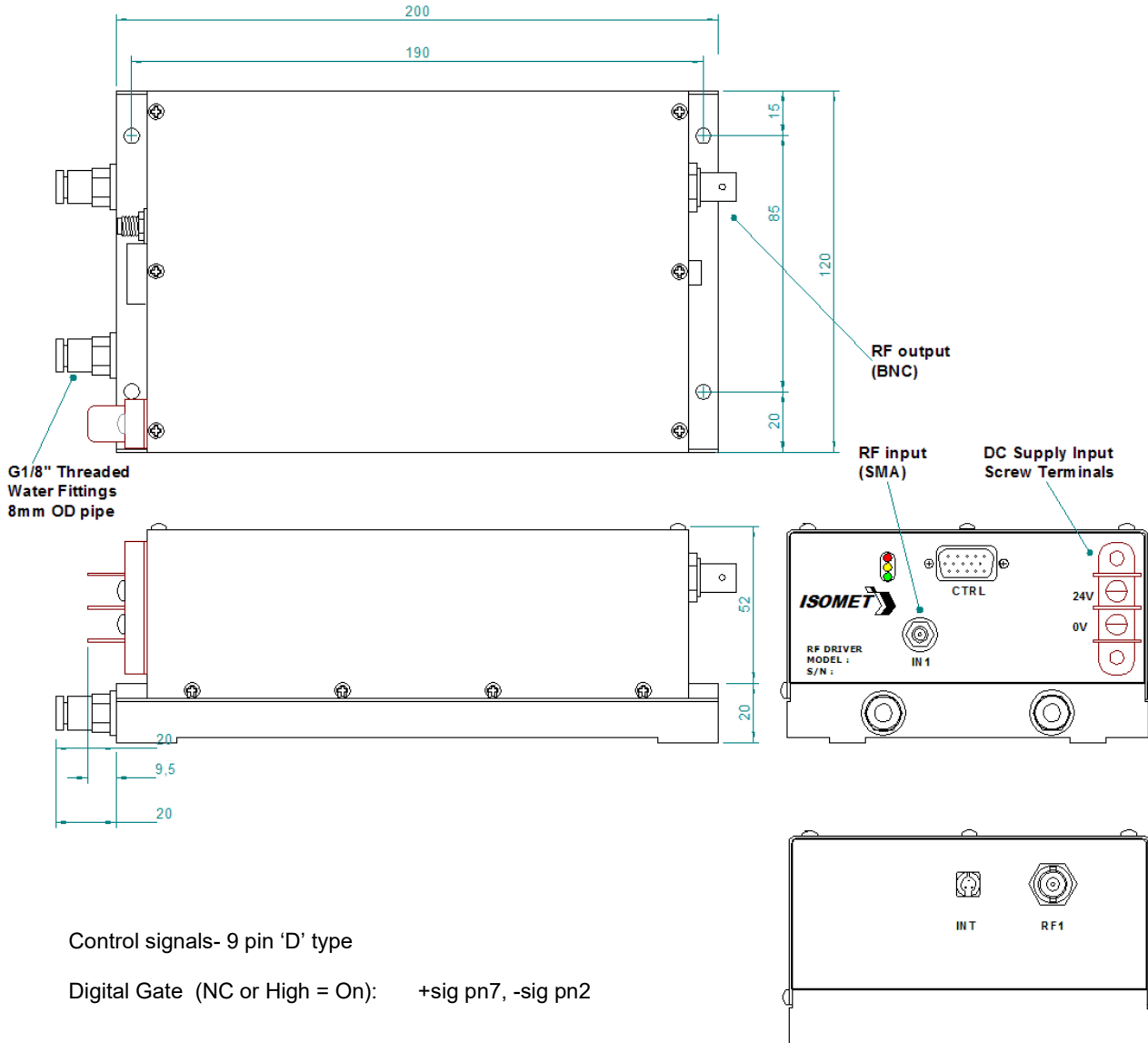
RF Amplifier



4020

OUTLINE DRAWING

Dim'n mm



Control signals- 9 pin 'D' type

Digital Gate (NC or High = On): +sig pn7, -sig pn2

Options -x, multiple combinations possible:

- BR : Brass water cooled heatsink (water fittings on RF output face)

Refer application note AN1906 regarding Coolant Specification

ALL SPECIFICATIONS SUBJECT TO CHANGE WITHOUT NOTICE
 ISOMET CORP, 10342 Battleview Parkway, Manassas, VA 20109, USA.
 Tel: (703) 321 8301 Fax: (703) 321 8546
 E-mail: ISOMET@ISOMET.COM Web Page: WWW.ISOMET.COM

Quality Assured.
In-house: RF & Digital design
Software Development
OEM manufacture