

Q1392-aQ80L-0.8 (L5)

Acousto-Optic Q-Switch

PRELIMINARY



0419

SPECIFICATIONS

A/R Operating Wavelengths:	640nm or 698nm or 721nm (specify on PO.)
Interaction Medium:	Quartz
Optical path length:	8mm
Acoustic Velocity:	5.7mm/μs
Active Aperture:	0.80mm
Static Insertion Loss	<1% at specified AR
Reflectivity /Surface,:	< 0.1%
Centre Frequency (CF):	80MHz
RF Bandwidth (minimum):	10MHz (+/- 5MHz)
Input Impedance:	50Ω Nominal
Maximum CW or average RF power	4W (estimate)
VSWR:	<1.2:1 @ 80MHz
DC Contrast Ratio:	>1000:1 min (>2000:1 typical)

PERFORMANCE vs. WAVELENGTH

Wavelength:	640nm	698nm	721nm
Input angle:	~0 mrad	~0 mrad	~0 mrad
Beams Separation:	9.0 mrad	9.8 mrad	10.1 mrad
Theoretical RF power for max loss efficiency:	11W	13W	14W

PERFORMANCE vs. BEAM DIAMETER at 698nm

Beam Diameter:	0.5mm
Rise Time:	56ns
Modulation Bandwidth @ MTF of 0.5:	6.2 MHz
Kick Out Efficiency, 3W RF drive:	> 40%
4W RF drive:	~ 50%

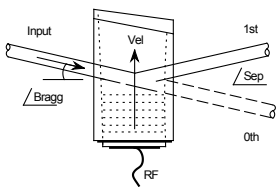
RF DRIVE ELECTRONICS

Analog/Digital modulation	552F-4
---------------------------	--------

Note: Mount device to heat conducting surface

ALL SPECIFICATIONS SUBJECT TO CHANGE WITHOUT NOTICE
 ISOMET CORP, 10342 Battlevue Parkway, Manassas, VA 22151, USA.
 Tel: (703) 321 8301 Fax: (703) 321 8546
 E-mail: ISOMET@ISOMET.COM Web Page: WWW.ISOMET.COM

Quality Assured.
 In-house: Crystal Growth,
 Optical Polishing,
 A/R coating, Vacuum Bonding



Q1392-aQ80L-0.8 (L5)

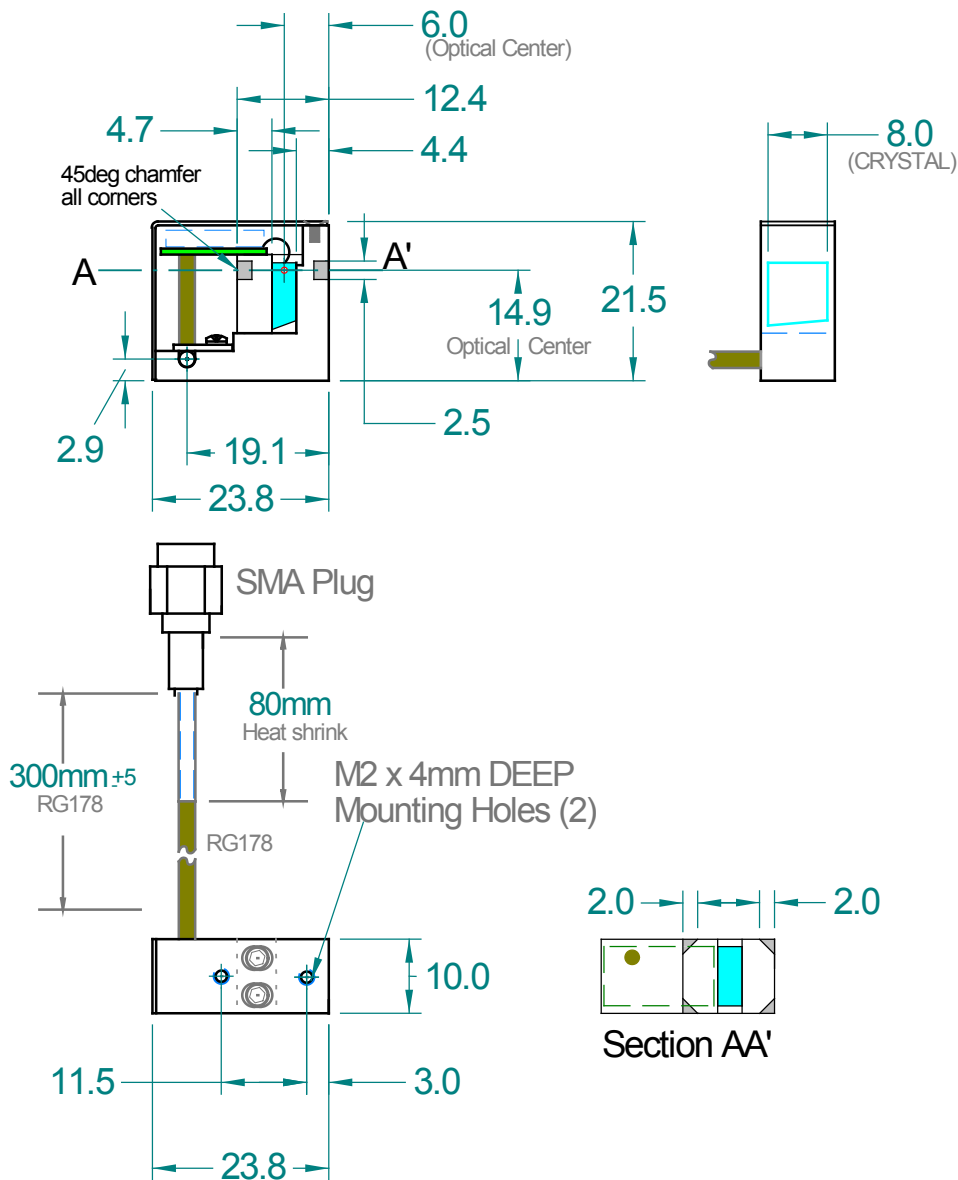
Acousto-Optic Q-Switch

PRELIMINARY



0419

OUTLINE DRAWING



ALL SPECIFICATIONS SUBJECT TO CHANGE WITHOUT NOTICE
 ISOMET CORP, 10342 Battlevue Parkway, Manassas, VA 22151, USA.
 Tel: (703) 321 8301 Fax: (703) 321 8546
 E-mail: ISOMET@ISOMET.COM Web Page: WWW.ISOMET.COM

Quality Assured.
 In-house: Crystal Growth,
 Optical Polishing,
 A/R coating, Vacuum Bonding