

## 620c/630c -350 RF Tuneable Driver



0508

The 630c-350 Modulator/Deflector Driver, is a modular, swept-frequency RF power source specifically designed to operate with Isomet acousto-optic devices such as the 1260-1044. The driver accepts a tuning voltage between approximately +0 volts and +10 volts and provides an RF output to the acousto-optic deflector at the tuned frequency. The driver also accepts a video input signal to control the amplitude of the RF output. The start frequency corresponding to a tuning voltage of 0.0 volts is defined by the frequency offset potentiometer (FRQ OS). This permits adjustment of the start frequency from approx 220-300MHz. A secondary low level output signal is provided at the tuned operating frequency. This can be used for monitoring or feedback purposes.

### SPECIFICATIONS

Oscillator Type:	Varactor-tuned thin film hybrid
Amplifier Type:	Broadband Class A
Output RF Power:	$\geq 0.7$ Watt
Output Impedance:	50 $\Omega$ nominal
Load VSWR:	< 2.5:1 for best results
Frequency monitor output (FMON):	50mV pp, 50 ohm
RF Power Variation vs.Frequency:	$\leq \pm 1$ dB
Spurious Outputs:	Harmonics > 20dB below fundamental
Tuning Range:	220 to 500MHz Maximum 250 to 450MHz Specified
Tuning Voltage (Vt):	0 to 10V for specified tuning range
Tuning Linearity:	< $\pm 2.0\%$ over specified tuning range
Tuning Voltage Impedance:	1 Kohm (nominal)
Tuning Slew Rate	> 10 MHz/ $\mu$ s
Residual FM:	< 10 KHz peak-to-peak
Frequency Stability:	$\pm 0.25\%$
Video Input Voltage (MOD):-	
(630C) Analogue option:	0-1V for 100% depth of modulation, DC coupled
(620C) Digital option:	TTL line driver compatible, positive logic
Input Impedance:	50 $\Omega$ source
RF On-Off Ratio:	> 30 dB
DC Power Input:	+28Vdc (or +24Vdc) at < 600 mA regulated to $\pm 0.25\%$
Temperature Range:	0°C to 60°C ambient, temperature at mounting face must not exceed 70°C
Mounting Orientation:	Any

#### ALL SPECIFICATIONS SUBJECT TO CHANGE WITHOUT NOTICE

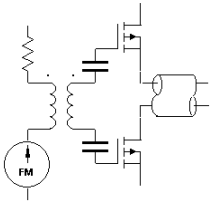
ISOMET CORP, 5263 Port Royal Rd, Springfield, VA 22151, USA.

Tel: (703) 321 8301 Fax: (703) 321 8546

E-mail: [ISOMET@ISOMET.COM](mailto:ISOMET@ISOMET.COM) Web Page: [WWW.ISOMET.COM](http://WWW.ISOMET.COM)

#### Quality Assured.

In-house: RF & Digital design  
Software Development  
OEM manufacture



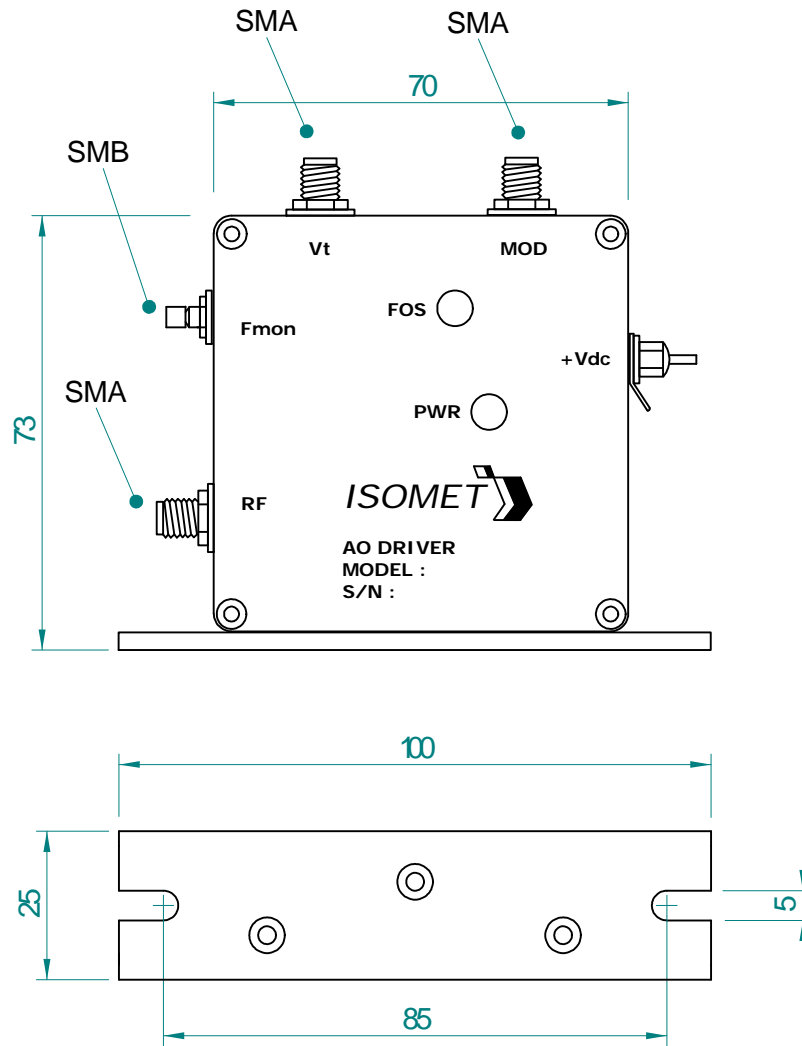
# 620c/630c -350

## RF Tuneable Driver



0508

### OUTLINE DRAWING



Dim'n: mm

**ALL SPECIFICATIONS SUBJECT TO CHANGE WITHOUT NOTICE**  
 ISOMET CORP, 5263 Port Royal Rd, Springfield, VA 22151, USA.  
 Tel: (703) 321 8301 Fax: (703) 321 8546  
 E-mail: [ISOMET@ISOMET.COM](mailto:ISOMET@ISOMET.COM) Web Page: [WWW.ISOMET.COM](http://WWW.ISOMET.COM)

**Quality Assured.**  
 In-house: RF & Digital design  
 Software Development  
 OEM manufacture