

620c/630c -80 RF Tuneable Driver



0716

The 630c-80 Modulator/Deflector Driver, is a modular, swept-frequency RF power source specifically designed to operate with Isomet acousto-optic off-axis deflectors such as the 1205C-2 series. The driver accepts a tuning voltage between approximately +0 volts and +10 volts and provides an RF output to the acousto-optic deflector at the tuned frequency. The driver also accepts a modulation input signal to control the amplitude of the RF output. The start frequency corresponding to a tuning voltage of 0.0 volts is defined by the frequency offset potentiometer (FRQ OS). This permits manual adjustment of the frequency. A secondary low level output signal is provided at the tuned operating frequency. This can be used for monitoring or feedback purposes.

SPECIFICATIONS

Oscillator Type:	Varactor-tuned thin film hybrid
Amplifier Type:	Broadband Class A
Output RF Power:	≥ 1.5 Watt
Output Impedance:	50Ω nominal
Load VSWR:	< 2.5:1 for best results
Frequency monitor output (FMON):	100mVpp, 50 ohm
RF Power Variation vs.Frequency:	≤ 1 dB
Spurious Outputs:	Harmonics > 20dB below fundamental
Tuning Range:	55 to 110MHz Maximum 60 to 100MHz as specified
Tuning Voltage (Vt):	0 to 10V for specified tuning range
Tuning Linearity:	<+/- 1.5% over specified tuning range
Tuning Voltage Impedance:	1 Kohm (nominal)
Tuning Slew Rate	> 10 MHz/μs
Residual FM:	< 10 KHz peak-to-peak
Frequency Stability:	±0.25%
Video Input Voltage (MOD):-	
(630C) Analogue option:	0-1V * for 100% depth of modulation, DC coupled
(620C) Digital option:	TTL line driver compatible, positive logic
Input Impedance:	50Ω source
RF On-Off Ratio:	> 40 dB
DC Power Input:	+24Vdc or +28Vdc at < 700 mA regulated to ± 0.25%
Temperature Range:	0°C to 60°C ambient, temperature at mounting face must not exceed 70°C
Mounting Orientation:	Any

*Alternatives available 0 - 5V = option -V

ALL SPECIFICATIONS SUBJECT TO CHANGE WITHOUT NOTICE

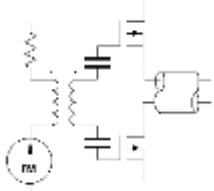
ISOMET CORP, 5263 Port Royal Rd, Springfield, VA 22151, USA.

Tel: (703) 321 8301 Fax: (703) 321 8546

E-mail: ISOMET@ISOMET.COM Web Page: WWW.ISOMET.COM

Quality Assured.

In-house: RF & Digital design
Software Development
OEM manufacture



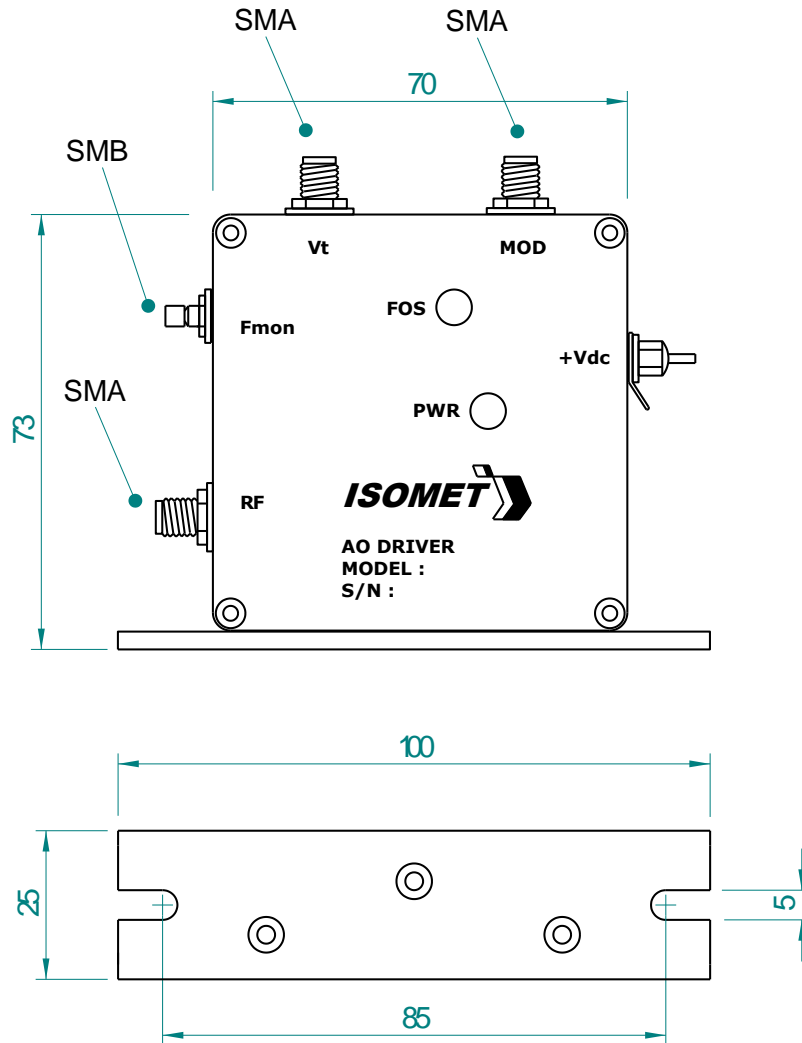
620c/630c -80

RF Tuneable Driver



0716

OUTLINE DRAWING



Dim'n: mm

ALL SPECIFICATIONS SUBJECT TO CHANGE WITHOUT NOTICE

ISOMET CORP, 5263 Port Royal Rd, Springfield, VA 22151, USA.

Tel: (703) 321 8301 Fax: (703) 321 8546

E-mail: ISOMET@ISOMET.COM

Web Page: WWW.ISOMET.COM

Quality Assured.

In-house: RF & Digital design

Software Development

OEM manufacture